



# SANTA SUSANA MOUNTAIN PARK ASSOCIATION

*Dedicated to the Preservation of the Santa Susana Mountains and Simi Hills*

A Non-Profit 501(c)(4) Incorporated Nov. 30, 1971

Founded Nov. 20, 1970

Email: [mail@ssmpa.com](mailto:mail@ssmpa.com)

Website: [ssmpa.com](http://ssmpa.com)

## Winter 2017 Newsletter (January)

### **SSMPA COMMUNITY MEETINGS: 7:00 pm**

*(Community Meetings are Free to SSMPA Members and the Public.)*

**Rockpointe Clubhouse: 22300 Devonshire Street, Chatsworth, CA 91311**

(On the south side, one block before entrance to Chatsworth Park South)

[\(map\)](#)

**Monday, January 16, 2016 7:00pm - 8:30pm**

Rockpointe Clubhouse: 22300 Devonshire Street , Chatsworth, CA 91311

### **HELP SAVE OUR OAK TREES**

**What Is Happening to Our Oaks?**

**Is the major problem drought? Imported pests?**

**Presenter: [Rosi Dagit](#), Senior Conservation Biologist and Certified Arborist**

[Resource Conservation District of the Santa Monica Mountains](#)

Our January 16th meeting will feature speaker Rosi Dagit, widely recognized as one of the best resources on our local oak trees.

She will speak about the Shot Hole Borer, an invasive insect that threatens the ecological landscape of our local mountains and the entire Santa Monica Mountain range.



Included in the discussion will be information on **how YOU can get involved** as "Citizen Scientists" to study and measure the spread of this invasive pest, and how YOU can get involved in projects to mitigate its damage.

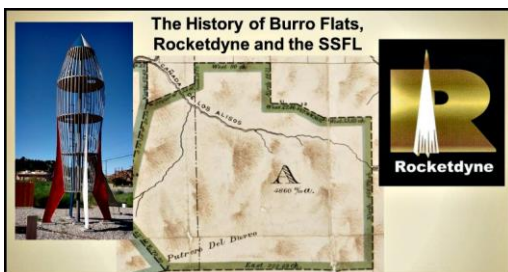
This should be a great meeting and presentation. **If you care about oaks, sycamores and other native trees in these hills, please come.** We cannot understate the damage this pest potentially poses to our mountains' habitats.

**Monday, Feb. 20, 2017 7:00pm - 8:30pm**

Rockpointe Clubhouse: [22300 Devonshire Street](#), Chatsworth, CA 91311

### **Burro Flats, Rocketdyne, & Santa Susana Field Laboratory History**

**Presenter: Ray Vincent**, Research Director, [Chatsworth Historical Society](#)



Ray will present the history of Burro Flats, Rocketdyne and the Santa Susana Field Lab. Early Chumash life, the Burro Flats Cave Painting, ranching and movie history will also be discussed.



Those of us who lived here in the 50s, 60's and 70's recall the sounds and sites of the rocket testing that took America into the Space Race.

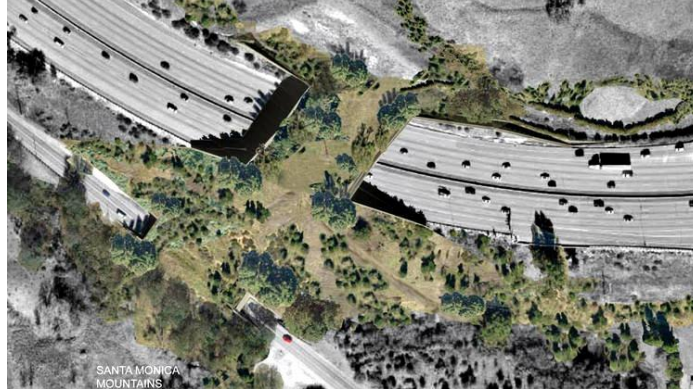
**Monday, March 20, 2017 7:00pm - 8:30pm**

Rockpointe Clubhouse: **22300 Devonshire Street**, Chatsworth, CA 91311

## **Progress Report on the Wildlife Corridor Overpass at Liberty Canyon**

**Presenter:** **Clark Stevens**, Executive Officer

[Resource Conservation District of the Santa Monica Mountains](#)



---

**Save the Date: Open House at Chatsworth Nature Preserve**  
**Sunday April 2, 2017 10am - 3pm**



photo: J. Luker

One day a year LA Department of Water and Power opens a portion of the Nature Preserve for visitation by the public. Open House 2017 will be Sunday April 2, from 10 am to 3 pm.

This year the event will be organized by the **Santa Susana Mountain Park Association** in cooperation with the **Los Angeles Department of Water and Power**.

**We will need your help**, especially with hike leaders. Please help us invite environmental groups. If you have any questions, please contact Sharon Shingai at [sshingai@att.net](mailto:sshingai@att.net) or 818 517-0255. More information will soon be available.

[See also.](#)

## Funding Approved for Parks in Los Angeles County with 75% of Vote

The County of Los Angeles placed MEASURE A on the ballot for the November 2016 general election.

**The Board of Directors of the Santa Susana Mountain Park Association (SSMPA) supported the passage of Measure A.**

MEASURE A provides replacement funding for maintenance and improvement of parks across the county, in cities and in unincorporated areas.

See SSMPA's [notice of support](#) for Measure A.

## Ventura County SOAR Renewed with 59% of Vote

MEASURE C was on the ballot in Ventura County for the November 2016 general election.

MEASURE C provides for re-authorization of SOAR, effective land-use planning procedures that ensure that open spaces will not be rezoned for development without the consent of the people.

**The Board of Directors of the Santa Susana Mountain Park Association (SSMPA) supported the passage of renewal SOAR.**

See SSMPA's [notice of support](#) for Measure C.

---

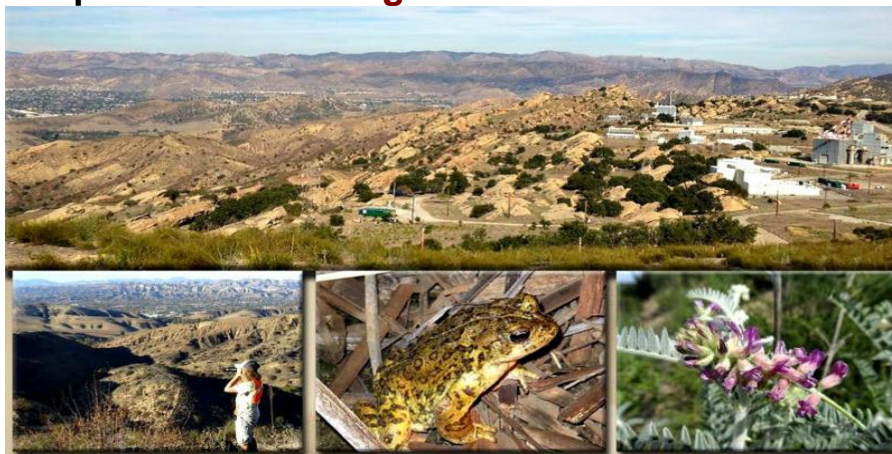
## Santa Susana Field Laboratory Cleanup:

**Just Released:** Draft Environmental Impact Statement for Cleanup  
by U.S. Department of Energy

[www.ssflareaiveis.com](http://www.ssflareaiveis.com)

[Summary of DOE's Draft Environmental Impact Statement](#)

**DOE presents "full range of reasonable alternatives"**



"DOE believes ... that decision-makers will need the full range of reasonable alternatives and careful analysis on which to base decisions." S.12.1

### [From SSMPA's Scoping Comments for DOE EIS](#)

"The EIS must include analysis of all practical levels of cleanup, in addition to the "cleanup to background" alternative, to comply with CEQA. DOE's EIS document must include a CEQA analysis that balances cleanup goals under various scenarios, including costs (financial and environmental), duration, and impacts." SSMPA,

April 2, 2014

**SSMPA appreciates that the U.S. Department of Energy accepted its responsibility to define the characteristics (physical, economic, environmental, etc.) of a full range of possible cleanup alternatives.**



## The Old Mission Equestrian Trail

**This trail once traversed the width of the San Fernando Valley from the San Fernando Mission west to Chatsworth and Beyond**

SSMPA board members **Dean and Darlene Wageman** are working to preserve the remaining section of the Old Mission Equestrian Trail as a Chatsworth / Los Angeles Cultural Landmark because of the trail's prominent role in our local history as a connection between the San Fernando Mission and Simi Valley and on towards the missions at Ventura and Santa Barbara.

The trail section that remains appears to be actively used for both local utilities and shared egress by neighboring residential development.



The Wagemans' concern is that if left unprotected, without a designation as part of Chatsworth's cultural history as a horse keeping community, future development will devour this rare piece of our historical past. Dean and Darlene are requesting assistance in getting the Old Mission Trail officially registered as one of Chatsworth's Historical Landmarks. If you can provide any assistance or guidance, contact Dean at [dean\\_wageman@yahoo.com](mailto:dean_wageman@yahoo.com)

---

### Second Chance:

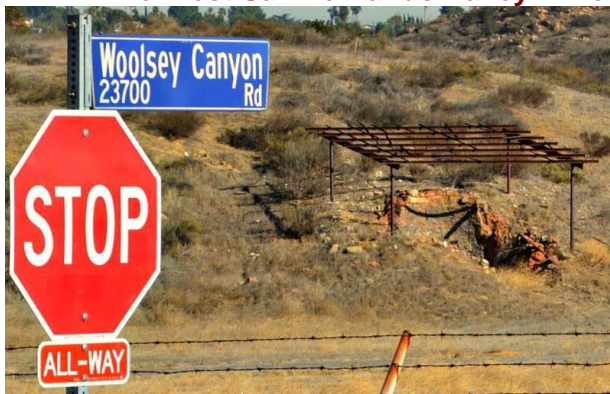
Did you miss SSMPA's standing-room-only Community Meeting in May 2016?

#### Our Chatsworth Region: History and Pre-History

**Albert Knight:** Anthropologist, Archaeologist  
and

**Ray Vincent:** Research Director at Chatsworth Historical Society

#### The West San Fernando Valley Lime Industry and Native American History



[See their presentation here](#)

## Twice Before Feeding the Wildlife

Feeding the wildlife seems like a good idea in the moment.

It's fun to see the animals up close and we feel we are "helping" them by feeding them, but please take a second thought and look at the bigger picture.

Squirrels, birds, raccoons and coyotes really can fend for themselves. They have been taking care of themselves long before we all settled near the Simi Hills.

Those "cute" squirrels are just "cuter" than rats, but are rodents and just as destructive. Encouraging them only brings more of them and more problems and potential damage to your home. Squirrels, like rats, can get into your attic and walls. They breed frequently and in numbers, chew everything in sight and cause damage. It costs you a chunk of money to get rid of them.....

And ever have one of those die in your wall or attic? Yuck! The smell is horrible for many days as the body decomposes.



Coyotes and raccoons are attracted to the rodents (rats & squirrels) or your pets as a source of food. Attracting squirrels attracts the coyotes and raccoons. And leaving pets or pet food out in the patio does the same. Free, easy-to-catch food. Above and beyond that, seed bird feeders attract the raccoons, opossums, squirrels and rats too. It's a food chain that keeps growing. Free food for everyone and more problems for you and your pets. We all appreciate the wildlife surrounding our neighborhoods. The mountains give us a beautiful atmosphere in which to live. We can enjoy the natural creatures from afar.

It's better to **Clean Up and Seal Up!**

- Don't leave pet food or water on your patios or around the outside of your home.
- Don't hang seed bird feeders.
- Don't feed the "cute" little squirrels.
- Eliminate thin, dense plantings, like ivy and ground cover where rodents can hide and breed.
- Seal all holes and openings to your home, garage and/or attic.
- Tightly seal trash cans and keep the area around trash cans clean of spillage.

**Please think twice before feeding the wildlife.**

~ Wendi Gladstone





## Abused Land in Chatsworth

It's not a park. It's private property. But still, is there any excuse for this abuse of the land? And it's immediately adjacent to, and encroaching upon, a public park, **Chatsworth Park North**.

The City Department of Building and Safety charged the owner with the following violations in April 2016:

Grading was performed without first obtaining a permit.

Open storage of inoperable vehicles.

Rubbish, garbage, trash and debris on the premises.

Open storage within the required yards.

Orders to comply have been issued and our local Building and Safety inspector is monitoring. But it will be a long process to try to repair all the damage to the land.

Click on photo below to see a gallery of photos of the property.



photo: T.Nachtrab

---

## RE-OPENING OF CHATSWORTH PARK SOUTH?

Remediation work began in early April 2016 at **Chatsworth Park South**, at the far west end of Devonshire Street.

After almost nine (9) years of closure, remediation work seems to be nearing completion.



Chatsworth Park South (City of LA) has been closed for years, awaiting cleanup of reported lead contamination on a portion of the acreage. The City engaged a contractor to do remediation work (grading, capping the surface, etc.).

Remediation is being accomplished primarily by hauling in materials (aggregate and clean soil) to serve as a one-foot cap over the soil that is contaminated with lead pellets and fragments of clay pigeons. Some areas will have soil removed and hauled away.

[City Council District 12](#) some time ago suggested that there may be a re-opening event in February 2017, but as of January 5th the Rec & Parks liaison at CD 12 said she was unaware of such, and also did not know when programming at the park's recreation center might resume.



[Click here to read the remediation plan](#)

For a timeline of the long saga of the Park's closure, see:  
[SSMPA's Watch Center for Chatsworth Park South Reopening](#)

---

### **Proposed Wildlife Corridor Zone in Ventura County**

A first of its kind **Wildlife Corridor Zone** will be up for approval by the Ventura County Board of Supervisors on **Tuesday January 24, 2017 at 1:30pm**. Public comments are welcome and will help the Board in this precedent-setting decision.

The **Wildlife Corridor Zone** would do two things:

- formally identify major wildlife corridors on County zoning and land use maps and,
- establish development standards for the zone that preserve the ability of wildlife to travel on undeveloped land from the Santa Monica Mountains to the Los Padres Forest.
- [Background Information Here](#)





## One Cat's Advice

We gratefully accept your new membership, renewals,

donations all year round!



Please click [HERE](#) to start or renew your membership by **credit card**



or fill in the membership form below and mail it.

Your membership (new and renewal) and donations help SSMPA efforts and continued success in providing free community meetings; advocacy for open space/nature preserves; keeping or reopening local parks; acquiring easement land parcels to protect native plants and habitat, wildlife corridors and park space; environmental educational opportunities; preservation of Chatsworth's and the surrounding area's historical, cultural, and archaeological sites.

If you do want to not receive your newsletter via e-mail and must receive it by snail mail, please send an additional \$10.00. If you have moved, please be sure to let us know your new address.

### SSMPA MEMBERSHIP GIVES YOU A VOICE IN YOUR COMMUNITY!

THANK YOU for your recent New Memberships:  
**Donna Davidson Dee, Ryan Valencia, Joe Phillips, Lisa Spencer**

THANK YOU for recent Special Contributions: **Edwin Embree family and Anonymous**

And THANK ALL OF YOU **loyal members** who have recently renewed your SSMPA Membership

Sign up for a LIFE MEMBERSHIP and/or a DONATION OF \$50.00 and receive a FREE "Cotton Blend Cool" [T-shirt](#) with a Chumash-inspired design.

Let us know your size when you mail in your check, or send an email to [mail@ssmpa.com](mailto:mail@ssmpa.com) if you pay online.

PLEASE SEND IN YOUR MEMBERSHIP RENEWAL TODAY OR NEW MEMBERS ...

Membership dues:

- \$20.00 for individuals
- \$150.00 for Individual Life Membership
- \$25.00 for a family
- \$200.00 for a Family Life Membership
- \$30.00 for a business or organization

Make your check payable to SSMPA and mail to:  
SSMPA, P.O. Box 4831, Chatsworth, CA 91313-4831

Please be sure to provide us the following information:

Names \_\_\_\_\_ E-mail \_\_\_\_\_

Address: \_\_\_\_\_

Phone: \_\_\_\_\_

Special interests or skills you have and if you would like to volunteer for any activities:

Note: If you must receive your newsletter via snail-mail, please send an additional \$10.00.

Thank you for your support!

IMPORTANT: Please send today your e-mail address ,or changes to your e-mail address, to: [mail@ssmpa.com](mailto:mail@ssmpa.com)  
Your e-mail address is used exclusively for SSMPA newsletter and community announcements.



## HIKES

**Welcome Walks:** Interpretive hikes in the Santa Susana Pass State Historic Park (SSPSHP):  
Facebook: [Friends of the Santa Susana Mountains](#) & [fssm.org](#)

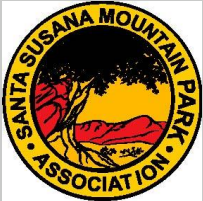
**SSPSHP Volunteer Hikes:** Contact: Jennifer Dandurand, park interpretive specialist, Los Encinos SHP: 818.784.4849;  
[jdandurand@parks.ca.gov](mailto:jdandurand@parks.ca.gov)

**Rancho Simi Trail Blazers:** [www.simitrailblazers.com](http://www.simitrailblazers.com)

**Sierra Club:** [www.angeles.sierraclub.org/sfv/](http://www.angeles.sierraclub.org/sfv/) Meetings, hikes

**SFV Audubon:** <http://www.sfvaudubon.org> Meetings and Bird Walks for families

**Hiking and Event Updates:** [ssmpa.com](http://ssmpa.com)



## Join Our Board of Directors?

Do you support conservation?  
Open space? Parks and parkland?

If you want to learn more about the possibility of joining our board, please drop a message at  
[mail@ssmpa.com](mailto:mail@ssmpa.com) No obligation. Confidential.

## SSMPA Mission

SSMPA's mission is to preserve and protect the Simi Hills, Santa Susana Mountains, and regional open space.

## Contribute to SSMPA?

Donate



Use your debit / credit card or Paypal  
[Click here to download our Fall 2016 newsletter](#)

**Santa Susana Mountain Park Association (SSMPA)**

**P. O. Box 4831**

**Chatsworth, CA 91313-4831**

ADDRESS SERVICE REQUESTED

Mail label here

---

**2016 / 2017 SSMPA Board of Directors**

President, Treasurer: Teena Takata  
Vice President: Tom Nachtrab  
Recording Secretary: Donna Nachtrab  
Director-at-Large: Vanessa Watters  
Director-at-Large: Robert "Bob" Dager  
Director-at-Large: Warren Stone  
Director-at-Large: Wendi Gladstone  
Director-at-Large: John Luker  
Director-at-Large: Sharon Shingai  
Director-at-Large: Darlene Brothers-Wageman  
Director-at-Large: Dean Wageman